

العدد الثالث والعشرون – 02 / يوليو 2017

## The Weed Flora of some Crop Fields in Al- Oylia region, Al-Marj, Libya

**\* Dr. Sabah M. Alhasi & \*\* Dr. Yacoub M. El-Barasi.**

(\* Botany Department, Faculty of science, Benghazi University, Al-Marj Branch, Libya. \*\* Botany Department, Faculty of science, Benghazi University , Libya)



## النباتات البرية التي تنمو داخل وحول بعض حقول الخضروات في منطقة العوييلية - المرج - ليبيا

### المخلص:

في الدراسة الحالية تم تسجيل النباتات البرية التي تنمو داخل وحول الحقول المزروعة بمحاصيل الخيار، الفلفل، الطماطم، الخس، والبصل اثناء فصل النمو في منطقة العوييلية بالمرج، ليبيا في هذه الدراسة لم يتم تسجيل اي نوع من النباتات البرية تنمو داخل الحقول الزراعية المدروسة بينما تم تسجيل 41 نوع من النباتات الزهرية تتبع 16 عائلة تنمو على حدود تلك الحقول. وقد وجد اكبر عدد من الانواع النباتية تابع للعائلة النجيلية (11) نوع والعائلة الصليبية (6) انواع والعائلة المركبة (4) انواع . *Aegilopos ventricosa*, *Centaurea Cyrenaica* اكثر الانواع النباتية تكرارا، وكثافة، فقد سجلا تكرارا مطلقا 50 و 29.2 % على التوالي وكثافة مطلقة 1.59 و 1.79 على التوالي. اما الانواع النباتية *Bromus rubens*, *Echium humile* قد سجلوا كثافة عالية وتكرار مطلقا يتراوح ما بين 7.5 و 20.8% وكثافة مطلقة بين 1.12-1.16 . ستة انواع كانوا اقل الانواع النباتية تكرارا والكثافة تتراوح بين 0.61- 1.92% وسجلوا تكرارا مطلقا 8.33 % وكثافة مطلقة تتراوح من 0.16 – 50 وقد بينت هذه الدراسة سيادة الانواع النباتية البرية التي على حدود الحقول المزروعة عن داخلها وهذا ربما يكون ناتج عن حرث الارض وازالة النباتات البرية من الحقول المزروعة.

## The Weed Flora of some Crop Fields in Al- Oylia region, Al-Marj, Libya

\* Dr. Sabah M. Alhasi & \*\* Dr. Yacoub M. El-Barasi

(\* Botany Department, Faculty of science, Benghazi University, Al-Marj Branch, Libya \*\* Botany Department, Faculty of science, Benghazi University , Libya)

### Abstract

The present study aims to record weeds plants within growing fields of Cucumber, Pepper, Tomato, Lettuce and Onion in Al- Oylia region ,Al-Marj ,Libya. A total number of 41 weed species 16 angiospermic families were found as a rudreal weeds. Maximum number of species (11) belongs to the family Poaceae (Graminaceae) followed by Cruciferea (Brasicaceae)(6) and Asteraceae (Composit) (4). *Aegilopos ventricosa*, *Centaurea Cyrenaica*, were found to be the most frequently occurring weed with relative frequency (RF) 3.75 and 6.42% respectively , absolute frequency,(AF) of 29.2 and 50% respectively,(AD)1.54and 1.75 respectively, and they recorded in most Eight studied fields showing 75% prevalence. Nine species namely *Allium roseum*, *Amaranthus retroflexus*,*Asphodelus tenuifolius*, *Avena sativa*, *Bromus rigidus*,*Phalaris minor*,*Phalaris canariensis*, *Rapistrum rugosum*, and *Urtica dioica* showed 50% prevalence with absolute frequency (AF) ranging from 16.7–33.3% ,and relative frequency (RF) from 2.14–4.27%, and(AD) ranging from 0.08-0.83 . The lest frequently occurring specieswith (AF) 8.33% and(AD) from 0.16-50 include six species. According to the frequency, three dominant weed species were found to be *Aegilopos ventricosa*, *Allium roseum* and *Sinapis alba* . Generally,the results in the present study show dominance of the ruderal over the agrestal weeds which may be due to ploughing and cleaning of agricultural soil.

**Key words:** weeds, Al- Oylia ,Al-Marj, Crops,Libya.

## Introduction

Weeds are the plants, which grow where they are not wanted. Weeds differ from other plants in being more adaptive and having peculiar characteristics that make them more competitive (Dangwal *et al.*, 2010). Agriculture plays a crucial role in the economy of Libya, so that weed surveys are useful for determining the occurrence and importance of weed species in crop production systems, Documenting the kinds of weed species and its relative distribution facilitates the establishment of priorities for research and extension services. Weeds are the plants, which grow where they are not wanted. Weeds represent one of the greatest limiting factors to efficient crop production. They Weeds cause greater economic losses on agricultural lands than all other pests combined (Kremer and Kennedy 1996).

Potentially serious new weeds are often overlooked until they are widely naturalized and having harmful impact on agricultural production and environment (Waterhouse 2003). These weeds effectively compete with the crop for nutrients ,water, space and reduce the yield ranging from 12 to 51 % (Rao and Singh, 1997; Mukharjee and Singh,2005; Halder and Patra, 2007). Weeds also serve as reservoir for plant pathogens that may cause significant loss in crop production. They are non-indigenous plants that can invade or negatively alternative plant communities (Muhammad *et al.*, 2009).

They may also support populations of non-native animals and microbes and hybridize with native species subsequently altering the gene pools (Mahanta *et al.*, 2007). The invasive weeds disturb the structure and composition of the native vegetation and as result a create pressure on the food chain and web of the ecosystem (Pysek and Richardson, 2007; Bais *et al.*, 2003; Pimentel *et al.*, 2000). The aim of this study was to record weeds plants growing as agrestal and rudreal during growing season of some cultivated crops during growing season of some cultivated crops in Al- Oylia region ,Al-Marj, Libya .

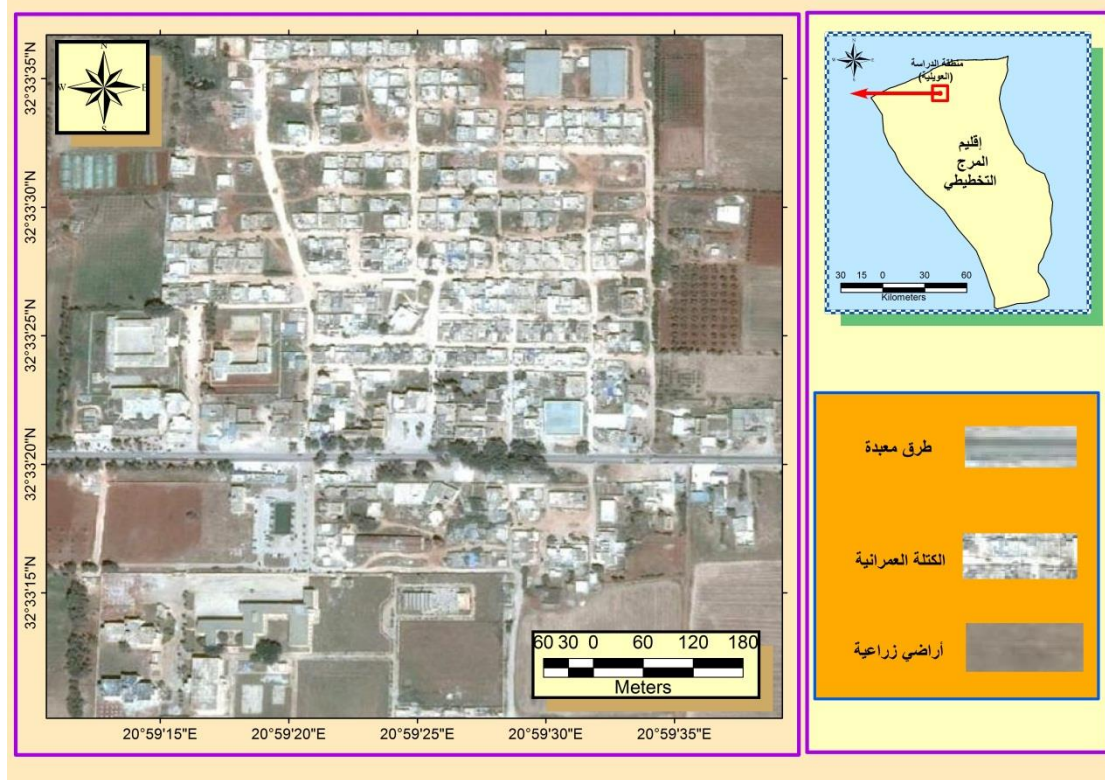
## Materials and methods

### Study area

Al- Oylia is located in the north east of Al-marj plain (**Fig. 1**). It is about of 20 km east of the New Al-marj city. Al- Marj area is located on the southern coast of the Mediterranean Sea in the province of Cyrenaica(Newport and Haddor 1963). Astronomical site extends between latitudes 33° and 31°N and longitudes 20.30°-21.30°E. It depends on ground water of 350-200 m deep as the chief source of the potable water (Alshamikh 2009).the study area is characterized by a Mediterranean climate, with cool rainy winter and hot dry summer (El-Tantawi 2005). ). The lowest mean value of minimum air temperature varies between 5.5 °C in January and 18.5 °C in August. The highest mean value of maximum air temperature varies between 20.5 °C in January and 38.3 °C in May. The relative humidity varies between 53% in June

### العدد الثالث والعشرون – 02/ يوليو 2017

and 75.2% in January. The Mean annual precipitation is 270.3 mm. and most of the rain falls during winter while summer is virtually dry. according to the meteorological data from Al-Marj city station.



**Fig. 1:** A map showing the location of Al- Oylyia region.

## Field Surveys

Field surveys of different crops growing in Al- Oylyia region were conducted during the growing season of 2015-2016. Eight sites were selected to study weed distribution, each site was divided into 4 stands (a total of 24 stands). Sampling was randomly done using  $1 \times 1 \text{ m}^2$  quadrat. According to Riaz *et al.*, (2007). The collected material was pressed, dried using blotting papers at room temperature, and identified with the help of available literature, and compared with authenticated specimens in regional herbaria. Voucher specimens were deposited in the Botany department, AL-marj branch, University Benghazi. The data regarding prevalence, absolute, relative frequency, absolute and relative density of weeds were calculated by applying the following formulas; percentage of Prevalence = (number of sites in which a specie occurs/Total number of sites) x 100, percentage of Absolute Frequency = (number of quadrates in which a specie occurs/Total number of quadrates) x 100, percentage of Relative Frequency = (Absolute frequency value of a species/Total absolute frequency for all species) x 100, percentage of Absolute density = total number of individual of a species in all quadrates/Total number of quadrates and percentage of

### العدد الثالث والعشرون – 02 / يوليو 2017

Relative density = (Absolute density value of a species/Total absolute density for all species) x 100.

## Results and discussion

Weeds management in cultivated lands involve the use of many techniques and strategies, all with the goal of achieving weed control and maximal crop yields. Ideally, growers would like to achieve a level of zero weeds on their farms. In practice, this may not be achievable, but any reduction in weeds and in the amount of weed seed or perennial prop gules reaching the soil will make subsequent weed control. For weeds to grow, they must have access of water, nutrients, and light (Bowman 1997).

In the present study, 41 weeds species belonging to 16 angiospermic families were found as a rudreal weeds in cultivated crops including; Cucumber, Pepper, Tomato, Lettuce and Onion. Maximum number of species (11) belongs to the family Poaceae (Graminaceae) followed by Cruciferea (6) and Asteraceae (Composit) (4) were recorded. As shown in (Table 1), *Aegilopos ventricosa*, *Centaurea Cyrenaica* , were found to be the most frequently occurring weed with relative frequency (RF) from 3.75–6.42% , absolute frequency,(AF) of 29.2-50% and they recorded in most Eight studied fields showing 75% prevalence. Nine species namely *Allium roseum*,*Amaranthus retroflexus*,*Asphodelus tenuifolius*, *Avena sativa*, *Bromus rigidus*,*Phalaris minor*,*Phalaris canariensis*, *Rapistrum rugosum*, and *Urtica dioica* showed 50% prevalence with absolute frequency (AF) from 16.7–33.3% and relative frequency (RF) from 2.14–4.27% .

Elevene species namely *Anagallis arvensis*, *Anthemis secundiramea*,*Avena sterilis*,*avena fatua*,*Diplotaxis muralis*, *Malva egyptia*,*Plantago albicans*,*Reseda alba*,*Sinapis alba*,*Sinapis flexuosa*, and *Sinapis parviflora* exhibited 37.5% prevalence with absolute frequency (AF) from 12.5–33.3% and relative frequency (RF) from 1.60– 4.27%.

**Table 1.** Prevalence(P%), Absolute frequency(AF%), Relative frequency(RF%); Absolute density(AD), Relative density(RD%) of weeds in growing fields of Cucumber, Pepper, Tomato, Lettuce and Onion in Al- Oylia region ,Al-Marj, Libya .

Nineteen species showed a low prevalence from 12.5–25% which are; *Conyza bonariensis*, *Echium humile*, *Heliotropium europaeum*, *Lolium rigidum*, *Malva parviflora*, *Malva sylvestris* , *Papaver hybridum*, *Polygonum aviculare*, *Polygonum equisetiforme*, *Sonchus oleraceus*, and *Urtica pilullifera* The previous recorded weeds which recorded as a ruderal may be in the future will become the aggressive weeds in the cultivated crops due to their high reproductive potential, fast growth rate, allelopathic nature causing inhibiting of the root length, shoot length, and weight of cultivated crops (Dagar *et al.*, 1976; Hussain *et al.*, 1992; Navie *et al.*, 1996; Singh *et al.*, 2005; Batish *et al.*, 2007). InIndia and Pakistan, *Rumex dentatus* L. is also of major concern in various crops of economic importance including wheat, since it is a

### العدد الثالث والعشرون – 02/ يوليو 2017

highly competitive weed and can cause drastic yield reduction (Chhokar *et al.* 2007; Anjum and Bajwa 2007; Mehmood *et al.*, 2007). So that infestation weeds distribution within crops fields in studying area will give more information about quality and yield losses in crop production systems.

**The previous and aforementioned important findings seem to point to the following recommendation:**

- 1- The further studies may also be done to check allelopathic effects of various weed species recorded on agricultural crops.
- 2-It will also be useful in suggesting suitable weed control recommendation for this region.

العدد الثالث والعشرون – 02/ يوليو 2017

<i>Species</i>	<b>Family</b>	<b>P</b> (%)	<b>AF</b> (%)	<b>RF</b> (%)	<b>AD</b>	<b>RD</b> (%)
<i>Aegilopos ventricosa</i> Tausch	Gramineae	75	50	6.42	1.54	5.92
<i>Allium roseum</i> L	Alliaceae	50	33.3	4.27	0.79	3.04
<i>Amaranthus retroflexus</i> L	Amaranthaceae	50	25	3.21	0.83	3.19
<i>Anagallis arvensis</i> L	Primulaceae	37.5	12.5	1.60	0.45	1.73
<i>Anthemis secundiramea</i> Biv	Compositae	37.5	12.5	1.60	0.41	1.57
<i>Asphodelus micropus</i> Salzm&Viv	Liliaceae	6.25	25	3.21	0.54	2.07
<i>Asphodelus tenuifolius</i> Cav	Liliaceae	50	20.8	2.67	0.83	3.19
<i>Avena sterilis</i> L	Gramineae	37.5	29.2	3.75	0.91	3.50
<i>Avena fatua</i> L	Gramineae	37.5	29.2	3.75	0.75	2.88
<i>Avena sativa</i> L	Gramineae	50	20.8	2.67	0.08	0.31
<i>Brachypodium distachyum</i> (L) p.Beauv.	Gramineae	25	25	3.21	0.87	3.34
<i>Brassica tournefortii</i> Gouan	Cruciferae	6.25	20.8	2.67	0.70	2.69
<i>Bromus dandrus</i> Roth	Gramineae	6.25	29.2	3.75	1.08	4.15
<i>Bromus rigidus</i> Roth	Gramineae	50	16.7	2.14	0.66	2.54
<i>Bromus rubens</i> L	Gramineae	62.5	7.5	0.96	1.12	4.31
<i>Centaurea Cyrenaica</i> Biguiont	Compositae	75	29.2	3.75	1.79	3.04
<i>Chenopodium murale</i> L	Chenopodiaceae	25	20.8	2.67	0.87	3.34
<i>Convolvulus arvensis</i> L	Convolvulaceae	6.25	29.2	3.75	0.95	3.65
<i>Convolvulus humilis</i> Jaeq	Convolvulaceae	25	12.5	1.60	0.37	1.42
<i>Conyza bonariensis</i> L	Compositae	25	12.5	1.60	0.37	1.42
<i>Diploaxis muralis</i> (L.) Dc.	Cruciferae	37.5	12.5	1.60	0.37	1.42
<i>Echium humile</i> Desf	Boraginaceae	25	20.8	2.67	1.16	4.46
<i>Heliotropium europaeum</i> L	Boraginaceae	25	20.8	2.67	0.54	2.07
<i>Lolium rigidum</i> Gaud	Gramineae	25	8.33	1.07	0.45	1.73
<i>Malva parviflora</i> L	Malvaceae	12.5	12.5	1.60	0.45	1.73
<i>Malva egyptia</i> L	Malvaceae	37.5	12.5	1.60	0.70	2.69
<i>Malva sylvestris</i> L	Malvaceae	25	8.33	1.07	0.50	1.92
<i>Papaver hybridum</i> L	Papaveraceae	25	8.33	1.07	0.16	0.61
<i>Phalaris minor</i> (L)Retz	Graminea	50	16.7	2.14	0.54	2.07



العدد الثالث والعشرون – 02 / يوليو 2017

<i>Phalaris canariensis</i> L	Graminea	50	16.7	2.14	0.41	1.57
<i>Plantago albicans</i> L	Plantaginaceae	37.5	12.5	1.60	0.37	1.42
<i>Polygonum aviculare</i> L	Polygonaceae	25	8.33	1.07	0.33	1.27
<i>Polygonum equisetiforme</i> S.et.SM	Polygonaceae	25	12.5	1.60	0.33	1.27
<i>Rapistrum rugosum</i> (L)ALL.	Cruciferae	50	20.8	2.67	0.37	1.42
<i>Reseda alba</i> L	Resedaceae	37.5	12.5	1.60	0.50	1.92
<i>Sinapis alba</i> L	Cruciferae	37.5	33.3	4.27	0.91	3.50
<i>Sinapis flexuosa</i> (Poilet)Lam	Cruciferae	37.5	25	3.21	0.91	3.50
<i>Sinapis parviflora</i> L	Cruciferae	37.5	16.7	2.14	0.58	2.23
<i>Sonchus oleraceus</i> L	Compositae	25	8.33	1.07	0.45	1.73
<i>Urtica dioica</i> L	Urticaceae	50	20.8	2.67	0.75	1.42
<i>Urtica pilullifera</i> L	Urticaceae	25	8.33	1.07	0.29	1.11

## References

- Alshamikh, A. (2009): Microbial pollution of the drink water in El-Marj city. Unpublished M.Sc. Thesis in Environmental science and Engineering at the Academy of Graduate Studies- Benghazi Branch. pp:135.
- Anjum, T., and Bajwa, R. (2007) :Field appraisal of herbicide potential of sunflower leaf extract against *Rumex dentatus*. *Field Crop Res.*, 100(2-3):139-142.
- Bais, H.P., Vepachedu, R., Gilroy, S., Callaway, R.M. and Vivanco, J.M. (2003): Allelopathy and exotic plant invasion: From molecules and genes to species interactions. *Sci.*, 301: 1377-1380.
- Batish, D.R., Lavanya, K., Singh, H.P. and Kohli, R.K. (2007): Root mediated allelopathic interference of Nettleleaved Goosefoot (*Chenopodium murale*) on wheat (*Triticum aestivum*). *J Agron Crop Sci* 193: 37-44.
- Bowman, G.D. (1997): Steel in the fields: farmer's guide to weed management tools Sustainable Agriculture Network.
- Chhokar, R.S., R.K. Sharma, G.R. Jat, A.K. Pundir and Gathala, M.K. (2007): Effect of tillage and herbicides on weeds and productivity of wheat under rice–wheatgrowing system. *Crop Prot.* 26 (11):1689-1696.
- Dagar, J.C., A.N. Rao and L.P. Mall. (1976): Regeneration of *Parthenium hysterophorus*. *Geobios*, 3: 202-203.
- Dangwal, L.R., Singh, A., Singh, T. and Sharma C. (2010): Effect of weeds on the yield of wheat crop in Tehsil Nowshera. *J. American Sci.* 6(10): 405-407.
- El-Tantawi, A.M. (2005): Climate Change in Libya and Desertification of Jifara Plain. Ph. D. Thesis, der Johannes Gutenberg Universität. pp: 261.
- Halder, J. and Patra, A.K. (2007): Effect of chemical weed-control methods on production of transplanted rice. *Indian J. Agron.* 52(2):111-113.
- Hussain, F., Abidi, N., Ayaz, S. and Saljoqi, A.U.R. (1992): Allelopathic suppression of wheat and maize seedling growth by *Imperata cylindrica* (Linn). *P Beauv. Sarhad J Agric* 8: 433-437.
- Kremer, R. J. and Kennedy, A. C. (1996): Rhizobacteria as biocontrol agents of weeds. *Weed Technol.* 10:601-609.
- Mahanta, J.J., Chutia, M. and Sharma, T.C. (2007): Study on weed flora and their influence on Patchouli (*Pogostemon cablin* Benth.) oil and patchoulol. *J. Plant Sci.*, 96-101.
- Mehmood, T.K., Khokhar, M. and Shakeel, M. (2007): Integrated weed management practices in garlic crop in Pakistan. *Crop Protection.* 26:1031-1035.
- Muhammad, S. Z., Khan, T., & Cheema A. (2009): Distribution of Weeds in Wheat, Maize and Potato fields of Tehsil Gojra, District Toba Tek Singh, Pakistan. *Pakistan Journal of Weed Science Research* 15(1): 91-105.

### العدد الثالث والعشرون – 02 / يوليو 2017

- Mukharjee, D. and Singh, R.P. (2005): Effect of micro herbicides on weed dynamics, yield and economics of transplanted rice (*Oryza sativa*). Indian J. Agron. 50(4): 292-295.
- Navie, S.C., McFayden, R.E., Panetta F.D. and Adkins, S.W. (1996): The biology of Australian weeds. 27. Parthenium hysterophorus L. Plant Protection Quart., 11: 76-88.
- Newport, T.G., and Haddor, Y. (1963): Ground Water Exploration in Al -Marj Area, Crenaica, Libya: Contribution to the Hydrology of Africa and the Mediterranean Region. United States Government Printing Office, Washington. pp 29.
- Pimentel, D., Lach, L., Zuniga, R. and Morrison, D. (2000): Environmental and economic costs of non indigenous species in the United States. Biosci., 50: 53-65.
- Pysek, P. and Richardson, D.M. (2007): Traits associated with invasiveness in alien plants: where do we stand? In: Nentwig W (ed) Biological invasions. Springer, Berlin, pp 97-126
- Rao, A.S. and Singh R.P. (1997): Effect of herbicide mixtures and sequential application on weed in transplanted rice (*Oryza sativa*). Indian J. Agron. 42(1): 77-81.
- Riaz T., Khan, S.N., Javaid, A. and Farhan, A. (2007): Weed flora of Galdiolus fields in Lahore, Pakistan. Pak J. Weed Sci. Res. 13(1-2):113-120.
- Singh, H.P., D.R. Batish, J.K. Pandher and Kohli, R.K. (2005): Phytotoxic effects of Parthenium hysterophorus residues on three Brassica species. Weed Biol. Mgmt. 5: 105-109.
- Waterhouse, B.M., (2003): Know your enemy: recent records of potentially serious weeds in northern Australia, Papua New Guinea and Papua (Indonesia). Telopea, 10(1): 477-485.